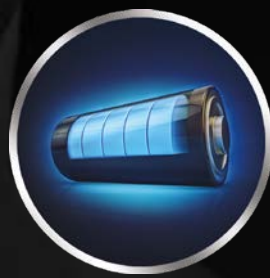




EVOREI

RAZOR PRO

cordeless hair and beard clipper



built-in battery



built-in battery



built-in battery



Easy to use



Full set



High standard of materials

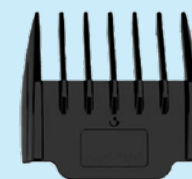


Multi-functional

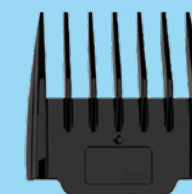
BY **Xblitz**®

Full set

The Evorei Razor is more than just a razor for shaving. This is the real kit that even the most expensive barber could recommend you that. A kit of combs allows to control and style hair length. The stand allows to organize multiple items of the kit easily.



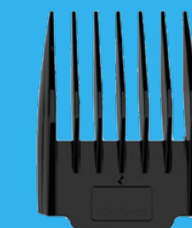
3 mm



6 mm



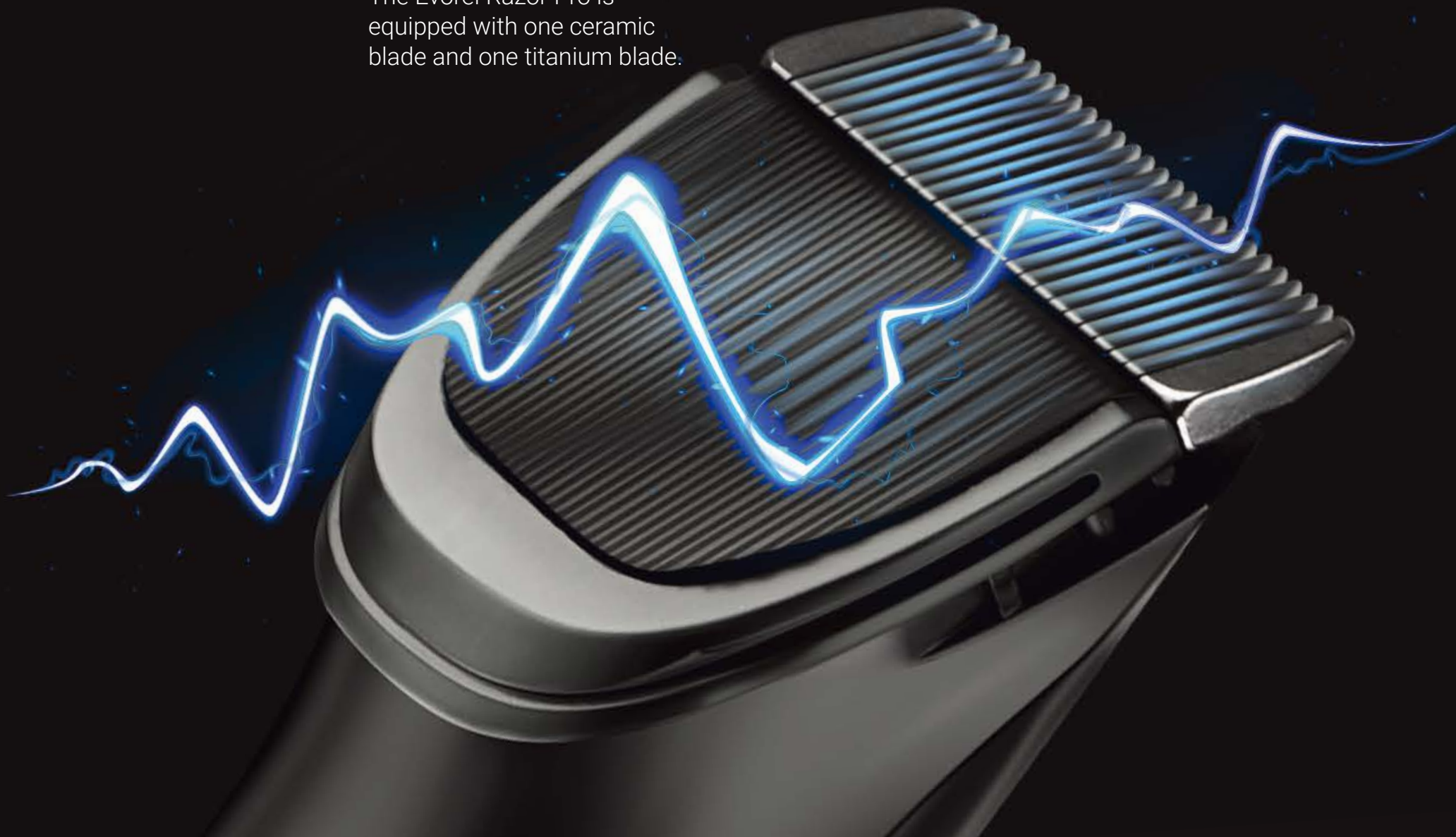
9 mm

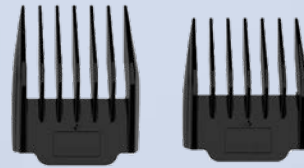


12 mm

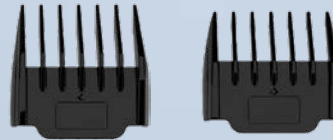
Ceramic & Titan

The Evorei Razor Pro is equipped with one ceramic blade and one titanium blade.





To get the effect of fashionable styled hairstyle, use the head with longer lengths during cutting the top of the head. styled hairstyle, use the head with longer lengths during cutting the top of the head.



By going down choose shorter heads.

4 lengths



Simple energy

Charging the wireless Evorei Razor is extremely easy and comfortable. Just put the device on charging stand then connect to electricity and ... that's it!

A man with a beard and short hair is using a black electric trimmer on his sideburns. He is shirtless and looking directly at the camera. The background is a modern bathroom with white tiles and a glass shower enclosure.

Become a hairdresser

You don't have to visit anymore the hairdresser to get a professional styling. Evorei Razor is an extremely easy-to-use device that you can use by yourself or ask any of your housemates to help you. Turn your own bathroom into a professional styling salon.



MO design DERN

By the metal case the razor gains a truly modern look. Thanks to that the Evorei Razor presents in front of the mirror, as well in the hairdressing salon as in a private bathroom.



Find your style...



Thanks to the set of attachments and heads for the cordless Evorei Razor razor, you can experiment as you wish. Find the stubble that best suits your style.

Technical data

Model: **EVOREI RAZOR**

Battery:	Lithium, voltage 3.7V
ON / OFF button with LED lamp:	Yes
Charging time:	About 3h
Working time:	Up to 4h
Heads:	Two. Stainless steel blade covered with titanium. Movableceramic blade
Dimensions:	175x34x45mm
Weight:	226g

